



Northwest Evaluation Association

## Partnering to help all kids learn

### **NWEA's Vision:**

A world in which education is  
kid-centric,  
relying on accurate and  
comprehensive data to  
inform each child's optimal  
learning path.

# Spring Reports

- Achievement Status and Growth Report
- District Summary Report
  - By District
  - By School
- Student Growth Summary Report
  - By District
  - By School
- Raw Data Files
  - Comprehensive Data File
  - Combined Data File

# Client Server MAP



The screenshot shows the NWEA website homepage. A large blue arrow points to the 'Reports Login' link in the top navigation bar. The main banner features a young girl reading a book on grass, with the text 'Get kid-centric with MAP and get results.' and a 'Learn how' button. The left sidebar contains a menu with links: 'WHY CHOOSE NWEA?', 'OUR RESEARCH', 'PRODUCTS & SERVICES', 'ABOUT NWEA', 'SPARK COMMUNITY', and 'PARTNER SUPPORT'. The right sidebar lists 'HELPFUL SHORTCUTS' for 'State & District Decision Makers', 'Legislators & Policy Makers', 'Teachers & Administrators', and 'Students & Parents'. The bottom section has three columns: 'NWEA's SPARK Community', 'Common Core Standards', and 'NWEA in the News', each with a brief description and a 'Join the community' link.

**NWEA**  
Northwest Evaluation Association

Contact Us | Reports Login | Partner Support | Search NWEA

**HELPFUL SHORTCUTS**

- State & District Decision Makers
- Legislators & Policy Makers
- Teachers & Administrators
- Students & Parents

## Get kid-centric with MAP and get results.

Discover the difference true partnership makes.

[Learn how](#)

- WHY CHOOSE NWEA?
- OUR RESEARCH
- PRODUCTS & SERVICES
- ABOUT NWEA
- SPARK COMMUNITY
- PARTNER SUPPORT

**NWEA's SPARK Community**

Read blogs, join discussions and find complimentary education resources at NWEA's online destination for partner collaboration.

[Join the community](#)

**Common Core Standards**

Common Core Standards align a wide range of K-12 education content standards into a single, unified platform, but states will implement the standards in a variety of ways. NWEA is helping partners

**NWEA in the News**

In Colorado's Eagle County School District, MAP tests are used to assess student learning levels, improve instruction, and set standards for achievement. Measuring with MAP



# Client Server MAP



Welcome NWEA Sample District 2

## Menu

[Home](#)

[Log Out](#)

## Actions

[Upload Roster](#)

[Upload Files](#)

[Test Term Progress](#)

[Declare Testing Complete](#)

[Order Reports](#)

[Retrieve Reports](#)

[Retrieve Files](#)

[Comprehensive Data File](#)

[Change Password](#)

## Online Reports

[Logins and Teacher Reports](#)

[Class Rosters](#)

[Enrollment Summary](#)

[Test Upload Summary](#)

## NWEA Technical Manual

The Technical Manual for MAP and MAP for Primary Grades details the technical measurement characteristics of those assessments, including psychometric characteristics, item development processes, test development processes, and processes for development and maintenance of the measurement scales. Download the Technical Manual [here](#).

## NWEA Norms Study Resources

Norms study resources help you use and interpret the NWEA RIT Scale Norms data. Resources include the Norms Study documentation, Growth Projection Calculator, Norms Study Data Files, and School Growth Study. You'll find the norms study resources [here](#).

## MAP for Primary Grades

After testing, access your MAP for Primary Grades reports by clicking on the MAP for Primary Grades link in the left navigation bar.

## DesCartes: A Continuum of Learning

## Dynamic Reporting Suite

The dynamic reporting suite is a new reporting platform that simplifies data analysis and offers classroom tools to apply test scores directly to instruction.

Without digging through pages of data or piles of numbers, at-a-glance analytical tools present information regarding the status of students (individually, by class, by grade, or by a school) relative to growth, proficiency, and norms. These data are easily accessed and analyzed, empowering educators to take meaningful action.

[Access dynamic reports now.](#)

IMPORT PROFILES

MANAGE USERS

MANAGE STUDENTS

MANAGE TEST SESSIONS

VIEW REPORTS &  
INSTRUCTIONAL RESOURCES

MAP Reports

Operational Reports

Reports Queue

Instructional Resources

MODIFY PREFERENCES

## MAP® Reports

### MAP Reports

- [Achievement Status and Growth Report](#)
- [Class Breakdown Reports](#)
- [Class Report](#)
- [District Summary Report](#)
- [Grade Report](#)
- [MAP for Primary Grades Class Report](#)
- [MAP for Primary Grades Student Report](#)
- [Projected Proficiency Summary Report](#)
- [Student Goal Setting Worksheet](#)
- [Student Growth Summary Report](#)
- [Student Progress Report](#)

### Data Tools

- [Data Export Scheduler](#)

### Information Center

#### Resources and Guides

- [MAP Reports and Instructional Resources Guide](#)
- [Reports Reference](#)  
Examples of each MAP report with explanations of its components.
- [Student Progress Report Quick Reference](#)  
Sample report with explanatory notes for parents and teachers.

#### Research

- [Norms Study Resources](#)

### Reports Queue

Reports Queued	1
Reports Ready	8
Reports Due to Expire	0

[View Full Reports Queue](#)

### Data Export Scheduler

#### Data Export Scheduler

Last updated on 1/22/13 10:00 AM

Data Export Ready  Download (537 bytes)

### Student Quick Search

You must specify at least one search criterion below. Use the wildcard character (\*) to search by first or last names.

Last Name

First Name

Student ID

# Achievement Status & Growth



## Achievement Status and Growth Summary Report

Hoffmeyer, Ashley R.  
LanguageArts 3(AB)

Term: Spring 2011-2012  
District: NWEA Sample District 7  
School: Mt. Bachelor Middle School  
Grouping: None  
Small Group Display: No  
Growth measured from Fall 2011 to Spring 2012

### Mathematics

ID	Name	SP12 Grade	SP12 Date	Test Type	FA11 Test RIT	FA11 Standard Error	SP12 Test RIT	SP12 Standard Error	Growth Standard Error	SP12 Growth Projection	SP12 Projected RIT	Growth Projection Met	Growth Index
SF08001037	Blasco, Andrea A.	6	4/18/12	S/G	211	4.4	208	4.1	6.0	6	217	No	-9
F08000197	Bryndel, Abbie E.	6	4/26/12	S/G	193	4.4	194	4.4	6.2	6	199	No	-5
F08000230	Corkery, Kari L.	6	4/19/12	S/G	197	2.9	198	2.8	4.0	6	203	No	-5
S08000044	Garrett, John Allen N.	6	4/20/12	S/G	229	3.2	220	4.4	5.4	6	235	No	-15
SF08001041	Gerhardt, Samuel I.	6	4/23/12	S/G	218	4.3	225	2.9	5.2	6	224	Yes	1
F08000161	Griego, Travis S.	6	4/25/12	S/G	239	2.7	237	4.0	4.8	6	245	No	-8
F08000196	Hanson, Pauline E.	6	4/17/12	S/G	218	4.2	213	4.1	5.9	6	224	No	-11
SF08001046	Hunter, Wilson N.	6	4/19/12	S/G	215	3.5	220	4.4	5.6	6	221	No	-1
F08000188	Liebowicz, Lindsay N.	6	4/19/12	S/G	189	4.3	190	2.7	5.1	6	195	No	-5
SF07001711	Matinea, Juan-Enrique I.	6	4/20/12	S/G	220	3.8	230	3.1	4.9	6	226	Yes	4
SF08000757	Payton, Willow W.	6	4/24/12	S/G	213	4.0	210	3.1	5.1	6	219	No	-9
F08000110	Resler, Stewart A.	6	4/17/12	S/G	216	3.1	212	2.5	4.0	6	222	No	-10
SF08000762	Salton, Sherlyn N.	6	4/20/12	S/G	198	2.9	205	4.5	5.4	6	204	Yes	1
SF07001806	Sanchez, Claudio K.	6	4/26/12	S/G	241	3.4	320	2.6	4.3	6	247	Yes	73
F08000068	Sartello, Shana A.	6	4/26/12	S/G	202	4.5	205	4.2	6.2	6	208	No	-3
SF07002055	Seckler, Brenton N.	6	4/16/12	S/G	320	2.6	320	3.5	4.4				
F08000108	Stauss, Michael O.	6	4/19/12	S/G	201	4.2	211	4.2	5.9	6	207	Yes	4
SF07001559	Summers, Jacqueline N.	6	4/26/12	S/G	221	4.5	228	3.1	5.5	6	227	Yes	1
SF07002220	Tyson, Yarnell R.	6	4/17/12	S/G	238	4.0	234	3.7	5.4	6	244	No	-10
SF07001601	Vasquez, Priscilla R.	6	4/20/12	S/G	222	3.3	260	3.0	4.5	6	228	Yes	32
F08000087	Velazquez, Michelle N.	6	4/26/12	S/G	211	3.5	190	4.4	5.6	6	217	No	-27

### Summary for: Mathematics

Count of Students with Growth Projection Available and Valid Beginning and Ending Term Scores	20
Count of Students who Met or Exceeded their Projected RIT	7
Percentage of Students who Met or Exceeded their Projected RIT	35.0%
Overall Percentage of Projected RIT Met or Exceeded	98.3%
Count of Students with Valid Spring 2011-2012 Test Scores	21
Spring 2011-2012 Mean RIT	225.2
Spring 2011-2012 Median RIT	213
Spring 2011-2012 Standard Deviation	35.7

#### Explanatory Notes

Due to statistical unreliability, summary data for groups of less than 10 are not shown.

\*\*\* Student did not have a valid, growth test event in this term.



# District Summary Report

## District Summary Report

Aggregate by **District**

Term: Fall 2012-2013  
District: NWEA Sample District 7  
Grouping: None  
Small Group Display: No

### Mathematics

MAP: Math 6+ Common Core 2010  
Common Core Mathematics K-12: 2010

#### Goal Performance

Term	Grade	Student Count	Mean RIT	Std Dev	Median	Algebra, Functions, Expressions, & Equations		The Real & Complex Number Systems		Geometry		Statistics and Probability	
						Mean	Std Dev	Mean	Std Dev	Mean	Std Dev	Mean	Std Dev
Fall 2012-2013	6	93	208.1	12.2	209	207.5	13.9	209.7	13.5	208.5	13.0	208.9	12.6
Spring 2011-2012	6	116	235.3	38.5	226	235.0	38.7	235.8	38.9	234.3	39.1	235.3	37.5
Winter 2011-2012	6	116	230.8	37.6	219	231.0	38.3	230.3	38.4	229.8	39.0	230.7	37.8
Fall 2011-2012	6	116	231.5	40.7	219	232.1	41.6	231.1	41.4	231.7	41.3	231.4	41.3
Spring 2010-2011	6	132	251.7	43.7	237	252.2	44.0	251.4	43.6	252.3	44.9	251.7	43.9
Winter 2010-2011	6	132	251.6	45.1	235	251.1	44.9	250.8	46.1	252.1	45.8	252.2	45.6
Fall 2010-2011	6	132	248.6	45.4	228	248.4	44.9	248.4	45.9	248.4	45.5	248.9	45.5
Fall 2012-2013	7	116	232.9	34.5	222	233.6	34.3	232.6	34.8	232.9	35.2	233.5	34.7
Spring 2011-2012	7	132	259.2	42.7	244	258.8	43.4	259.2	42.5	259.2	43.3	259.2	42.2
Winter 2011-2012	7	132	252.0	41.5	240	252.5	42.1	252.5	41.8	253.0	41.4	252.1	42.1
Fall 2011-2012	7	132	249.4	41.8	235	249.2	42.0	249.5	41.9	248.8	41.3	249.5	42.5
Spring 2010-2011	7	104	257.8	40.5	245	258.4	40.7	257.4	41.4	257.5	40.6	258.1	40.7
Winter 2010-2011	7	104	251.2	39.8	240	251.0	40.1	250.9	39.5	251.1	39.4	251.6	39.5
Fall 2010-2011	7	104	250.3	42.0	237	250.1	42.8	250.8	42.6	250.4	41.6	251.0	42.8
Fall 2012-2013	8	101	258.5	11.8	241	258.2	11.2	258.7	10.7	258.5	11.5	258.3	10.6
Spring 2011-2012	8	101	258.7	37.0	248	258.5	37.6	258.2	37.5	257.9	37.5	257.7	36.6
Winter 2011-2012	8	101	258.3	40.0	248	258.7	40.4	257.7	40.7	258.8	40.0	258.8	40.6
Fall 2011-2012	8	101	250.6	38.3	240	251.1	38.4	251.0	38.3	251.6	39.2	250.8	38.5
Spring 2010-2011	8	35	207.9	11.6	204	206.1	13.8	208.2	12.5	208.4	13.8	208.8	14.7
Winter 2010-2011	8	35	207.3	11.3	206	204.3	13.6	205.9	11.9	207.1	13.3	208.0	12.6
Fall 2010-2011	8	35	203.7	11.7	201	204.5	12.5	203.6	11.0	203.9	14.1	201.6	13.5
Fall 2012-2013	9	54	264.2	41.7	248	263.9	41.7	263.5	41.7	265.1	40.5	264.3	42.6
Spring 2011-2012	9	33	211.7	15.7	208	211.8	17.3	211.2	16.3	210.6	17.8	210.4	17.1
Winter 2011-2012	9	33	209.7	14.5	206	210.2	15.1	209.5	14.4	207.3	15.6	209.3	13.7
Fall 2011-2012	9	33	207.9	15.0	203	207.7	16.2	209.4	14.4	208.2	16.2	208.2	17.7
Spring 2010-2011	9	52	211.1	21.0	205	211.0	22.2	210.8	20.5	211.2	20.6	211.2	22.5
Winter 2010-2011	9	52	212.7	25.3	208	213.3	26.5	213.3	26.7	212.4	25.9	211.9	26.4
Fall 2010-2011	9	52	203.9	15.2	195	203.9	17.1	204.4	14.8	204.2	17.7	203.7	16.2
Fall 2012-2013	10	17	206.5	13.3	202	208.7	14.8	208.0	15.2	205.9	15.6	204.8	16.8

#### Explanatory Notes

Due to statistical unreliability, summary data for groups of less than 10 are not shown.  
A goal mean shown with ***bold italic*** represents performance that might be an area of concern. A goal mean shown with ***bold underline*** represents an area of relatively strong performance.

# District Summary Report

Digitally sign or certify a PDF file



## District Summary Report

Aggregate by **School**

Term: Fall 2012-2013  
District: NWEA Sample District 7  
Grouping: None  
Small Group Display: No

### Mathematics

#### Three Sisters Elementary School

MAP: Math 2-5 Common Core 2010  
Common Core Mathematics K-12: 2010

						Goal Performance									
						Operations and Algebraic Thinking		Number and Operations in Base Ten		Number & Operations-Fractions		Measurement and Data		Geometry	
Term	Grade	Student Count	Mean RIT	Std Dev	Median	Mean	Std Dev	Mean	Std Dev	Mean	Std Dev	Mean	Std Dev	Mean	Std Dev
Fall 2012-2013	2	20	200.5	41.5	188	201.0	40.8	200.8	41.4	203.1	39.1	201.1	38.8	201.1	40.2
Spring 2011-2012	3	40	202.5	22.1	202	204.3	23.2	201.1	21.8	202.6	23.1	202.9	22.4	203.0	22.3
Winter 2011-2012	3	40	201.1	30.1	194	198.4	30.1	201.2	29.2	200.9	30.9	200.9	30.5	200.1	30.8
Fall 2011-2012	3	40	190.8	23.9	185	190.4	23.9	189.3	24.9	190.5	23.3	189.4	23.5	191.1	24.9
Spring 2010-2011	3	57	195.6	10.2	194	194.7	13.2	194.8	11.0	193.7	12.5	196.0	10.8	195.7	10.7
Winter 2010-2011	3	57	193.2	19.5	190	192.8	20.3	193.7	18.7	193.5	19.7	194.0	21.7	193.1	21.6
Fall 2010-2011	3	57	183.9	10.1	183	183.5	12.0	183.7	12.1	183.4	11.7	184.2	11.4	183.9	12.9
Fall 2012-2013	4	39	200.5	12.8	199	200.4	16.0	200.4	13.7	199.8	13.0	200.5	14.5	199.9	14.0
Spring 2011-2012	4	58	207.4	11.5	209	207.3	11.4	207.0	13.2	207.2	13.0	207.3	13.7	206.8	13.9
Winter 2011-2012	4	56	203.6	18.7	203	202.7	20.3	203.9	20.0	204.0	19.7	205.1	19.5	203.0	19.2
Fall 2011-2012	4	58	199.4	18.9	199	198.8	20.1	198.4	20.5	199.8	20.2	199.4	19.9	198.5	19.6
Spring 2010-2011	4	93	204.7	10.7	205	205.8	11.6	205.2	12.0	203.9	12.4	203.8	12.0	205.1	12.5
Winter 2010-2011	4	93	202.5	16.6	202	202.1	16.9	202.3	17.8	204.1	17.7	202.2	17.4	203.5	17.9
Fall 2010-2011	4	93	196.2	16.5	196	195.1	17.8	195.3	18.1	196.2	16.9	196.0	17.8	196.0	17.5
Fall 2012-2013	5	16	207.2	10.4	209	206.4	12.8	206.1	11.0	205.4	11.3	207.8	13.4	208.0	11.1
Spring 2011-2012	5	16	219.6	29.1	216	219.9	28.8	221.1	30.1	<u>224.3</u>	29.4	222.5	31.3	221.0	28.6
Winter 2011-2012	5	16	213.3	14.9	212	214.6	18.1	214.1	16.3	211.3	18.2	210.8	15.5	215.5	17.9
Fall 2011-2012	5	16	205.0	11.8	204	203.4	13.2	205.4	13.5	202.4	12.8	203.4	15.7	204.4	14.9
Spring 2010-2011	5	45	249.6	49.4	225	250.6	49.2	248.9	49.9	248.7	51.0	251.1	49.9	249.9	49.9
Winter 2010-2011	5	45	241.5	46.9	221	242.1	47.0	241.6	47.3	242.4	45.9	240.3	49.0	241.5	45.9
Fall 2010-2011	5	45	232.0	46.3	213	233.9	46.3	232.2	47.0	232.3	46.2	232.8	45.4	232.6	46.7

MAP: Math Primary Grades Common Core 2010  
Common Core Mathematics K-12: 2010

						Goal Performance							
						Operations and Algebraic Thinking		Number and Operations in Base Ten		Measurement and Data		Geometry	
Term	Grade	Student Count	Mean RIT	Std Dev	Median	Mean	Std Dev	Mean	Std Dev	Mean	Std Dev	Mean	Std Dev
Fall 2012-2013	2	10	169.8	7.1	170	<u>164.6</u>	8.8	170.4	9.8	<u>173.8</u>	8.8	168.7	10.0

#### Explanatory Notes

Due to statistical unreliability, summary data for groups of less than 10 are not shown.  
A goal mean shown with **bold italic** represents performance that might be an area of concern. A goal mean shown with bold underline represents an area of relatively strong performance.



# Student Growth Summary

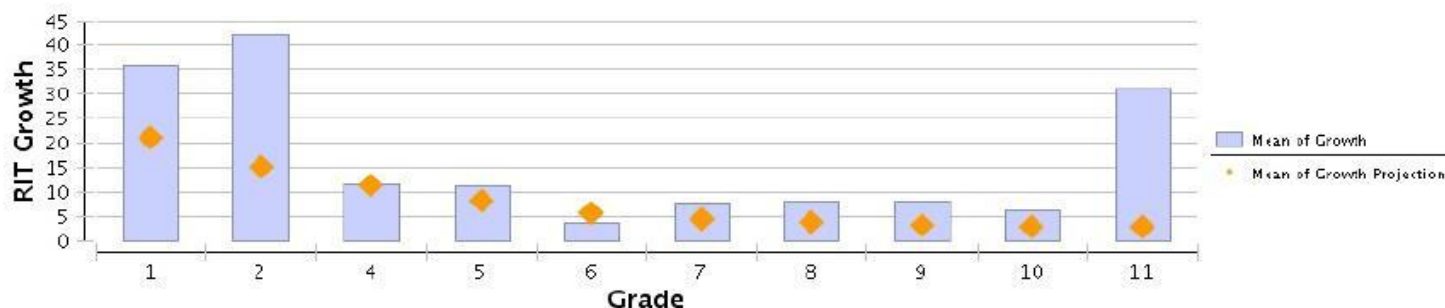
## Student Growth Summary Report

Aggregate by **District**

Term: Fall 2012-2013  
District: NWEA Sample District 7  
Grouping: None  
Small Group Display: No  
Growth measured from: Fall 2011 to Fall 2012

Reading		Fall 2011		Fall 2012		Actual Growth			Projected Growth					
Grade (Fall 2012)	Count	Mean RIT	Std Dev	Mean RIT	Std Dev	Mean Growth	Std Dev	Sampling Error	Count with Projection	Mean Projection	Growth Index	Percent of Projection	Count Meeting Projection	Percent Meeting Projection
1	16	120.0	0.0	155.8	14.7	35.8	14.7	3.8	16	21.0	14.8	170.5	13	81.3
2	16	143.4	6.3	185.4	36.9	41.9	35.0	9.0	16	15.0	26.9	279.3	15	93.8
4	41	177.5	12.9	189.2	12.0	11.7	11.9	1.9	41	11.2	0.5	104.5	23	56.1
5	43	190.0	23.3	201.1	22.7	11.1	25.7	4.0	42	8.1	5.5	137.0	22	52.4
6	37	196.7	11.3	200.5	22.8	3.7	18.9	3.2	37	5.5	-1.8	67.3	10	27.0
7	116	216.2	33.1	223.9	38.3	7.8	33.5	3.1	107	4.3	7.5	181.4	57	53.3
8	132	230.2	36.4	238.4	41.1	8.2	31.8	2.8	116	3.7	9.3	221.6	67	57.8
9	101	230.4	34.5	238.4	37.8	8.0	24.5	2.5	90	3.1	7.5	258.1	55	61.1
10	33	208.9	16.4	215.0	25.7	6.2	17.9	3.2	33	2.8	3.3	221.4	15	45.5
11	52	198.5	13.4	229.4	36.8	30.9	42.4	5.9	52	2.7	28.2	1144.4	41	78.8

Reading



# Student Growth Summary

## Student Growth Summary Report

Aggregate by **School**

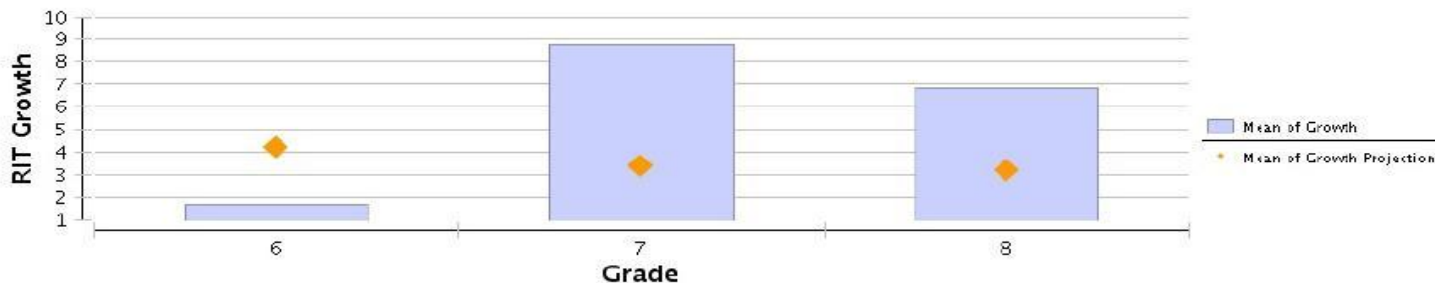
Term: Spring 2011-2012  
District: NWEA Sample District 7  
Grouping: None  
Small Group Display: No  
Growth measured from: Fall 2011 to Spring 2012

### Mt. Bachelor Middle School

#### Reading

Grade (Spring 2012)	Count	Fall 2011		Spring 2012		Actual Growth			Projected Growth					
		Mean RIT	Std Dev	Mean RIT	Std Dev	Mean Growth	Std Dev	Sampling Error	Count with Projection	Mean Projection	Growth Index	Percent of Projection	Count Meeting Projection	Percent Meeting Projection
6	116	216.2	33.1	217.9	26.0	1.7	23.3	2.2	107	4.2	1.8	40.5	61	57.0
7	132	230.2	36.4	239.0	38.8	8.8	29.5	2.6	116	3.4	9.7	258.8	75	64.7
8	101	230.4	34.5	237.1	33.4	6.8	26.7	2.7	90	3.2	8.5	212.5	59	65.6

#### Reading



#### Explanatory Notes

Due to statistical unreliability, summary data for groups of less than 10 are not shown.



Welcome NWEA Sample District 2

## Menu

[Home](#)

[Log Out](#)

## Actions

[Upload Roster](#)

[Upload Files](#)

[Test Term Progress](#)

[Declare Testing Complete](#)

[Order Reports](#)

[Retrieve Reports](#)

[Retrieve Files](#)

[Comprehensive Data File](#)

[Change Password](#)

## Online Reports

[Logins and Teacher Reports](#)

[Class Rosters](#)

[Enrollment Summary](#)

[Test Upload Summary](#)

## NWEA Technical Manual

The Technical Manual for MAP and MAP for Primary Grades details the technical measurement characteristics of those assessments, including psychometric characteristics, item development processes, test development processes, and processes for development and maintenance of the measurement scales. Download the Technical Manual [here](#).

## NWEA Norms Study Resources

Norms study resources help you use and interpret the NWEA RIT Scale Norms data. Resources include the Norms Study documentation, Growth Projection Calculator, Norms Study Data Files, and School Growth Study. You'll find the norms study resources [here](#).

## MAP for Primary Grades

After testing, access your MAP for Primary Grades reports by clicking on the MAP for Primary Grades link in the left navigation bar.

## DesCartes: A Continuum of Learning


## Dynamic Reporting Suite

The dynamic reporting suite is a new reporting platform that simplifies data analysis and offers classroom tools to apply test scores directly to instruction.

Without digging through pages of data or piles of numbers, at-a-glance analytical tools present information regarding the status of students (individually, by class, by grade, or by a school) relative to growth, proficiency, and norms. These data are easily accessed and analyzed, empowering educators to take meaningful action.

[Access dynamic reports now.](#)





Measures of Academic Progress®

Logged in as susan.klassen@nwea.org

[Home](#) | 
 [Help](#) | 
 [Contact](#) | 
 [Change Password](#) | 
 [Logout](#)

**IMPORT PROFILES**

**MANAGE USERS**

**MANAGE STUDENTS**

**MANAGE TEST SESSIONS**

**VIEW REPORTS & INSTRUCTIONAL RESOURCES** ▲

MAP Reports

Operational Reports

Reports Queue

Instructional Resources


**MODIFY PREFERENCES** ▼

## MAP® Reports

### MAP Reports

- [Achievement Status and Growth Report](#)
- [Class Breakdown Reports](#)
- [Class Report](#)
- [District Summary Report](#)
- [Grade Report](#)
- [MAP for Primary Grades Class Report](#)
- [MAP for Primary Grades Student Report](#)
- [Projected Proficiency Summary Report](#)
- [Student Goal Setting Worksheet](#)
- [Student Growth Summary Report](#)
- [Student Progress Report](#)

**Data Tools**

- [Data Export Scheduler](#) 

### Reports Queue


Reports Queued	1
Reports Ready	8
Reports Due to Expire	0

[View Full Reports Queue](#)

### Data Export Scheduler

[Data Export Scheduler](#)

Last updated on 1/22/13 10:00 AM

Data Export Ready  [Download](#) (537 bytes)

### Student Quick Search

You must specify at least one search criterion below. Use the wildcard character (\*) to search by first or last names.

**Last Name**   
**First Name**   
**Student ID**

[Search](#)

### Information Center

#### Resources and Guides

- [MAP Reports and Instructional Resources Guide](#)
- [Reports Reference](#)  
Examples of each MAP report with explanations of its components.
- [Student Progress Report Quick Reference](#)  
Sample report with explanatory notes for parents and teachers.

#### Research

- [Norms Study Resources](#)

IMPORT PROFILES

MANAGE USERS

MANAGE STUDENTS

MANAGE TEST SESSIONS

VIEW REPORTS &  
INSTRUCTIONAL RESOURCES ▲

MAP Reports

Operational Reports

Reports Queue

Instructional Resources

MODIFY PREFERENCES ▼

## Data Export Scheduler

- ☐ Disable  
☒ Enable

\* Required

### Frequency \*

- ☒ One Time  
☐ Daily  
☐ Weekly

Monday ▼

### Term \*

Spring 2012-2013 ▼

### Export Type \*

- |  |   |
|--|---|
| <input checked="" type="radio"/> Comprehensive Data File | Contents include two CSV files with student info by school and assessment results, and two optional CSV files with student class assignments and student program participation. These files are created per user. |
| <input type="radio"/> Combined Data File                 | Contents include student info by school and assessment results combined in a single CSV file. This file is created per user.  |

### Contents

#### Included

Student info by school  
Assessment results

#### Optional

- ☐ Student class assignments  
☐ Student program participation  
☐ Student test accommodations

#### Aggregation

- ☐ By School  
☒ By District

# Normative Data

2011 READING STATUS NORMS (RIT VALUES)			
Grade	Beginning-of-Year Mean	Middle-of-Year Mean	End-of-Year Mean
K	142.5	150.6	156.0
1	160.3	170.7	176.9
2	175.9	183.6	189.6
3	189.9	194.6	199.2
4	199.8	203.2	206.7
5	207.1	209.8	212.3
6	212.3	214.3	216.4
7	216.3	218.2	219.7
8	219.3	221.2	222.4
9	221.4	221.9	222.9
10	223.2	223.4	223.8
11	223.4	223.5	223.7

2011 MATHEMATICS STATUS NORMS (RIT VALUES)			
Grade	Beginning-of-Year Mean	Middle-of-Year Mean	End-of-Year Mean
K	143.7	150.5	156.1
1	162.8	172.4	179.0
2	178.2	185.5	191.3
3	192.1	198.5	203.1
4	203.8	208.7	212.5
5	212.9	217.8	221.0
6	219.6	222.8	225.6
7	225.6	228.2	230.5
8	230.2	232.8	234.5
9	233.8	234.9	236.0
10	234.2	235.5	236.6
11	236.0	237.2	238.3

2011 LANGUAGE USAGE STATUS NORMS (RIT VALUES)			
Grade	Beginning-of-Year Mean	Middle-of-Year Mean	End-of-Year Mean
2	175.4	185.3	190.0
3	191.1	196.5	200.3
4	200.9	204.4	207.0
5	208.0	211.0	212.9
6	212.3	214.4	216.2
7	215.8	217.3	218.7
8	218.7	220.2	221.3

In the samples, each district's base school calendar was used to determine instructional days. Using the instructional days data, time frames for beginning-of-year tests, middle-of-year tests, and end-of-year tests were established. The centers of these time frames were roughly 20 days, 80 days, and 130 days from the beginning of the academic year of the student's school for the fall, winter and spring terms, respectively.



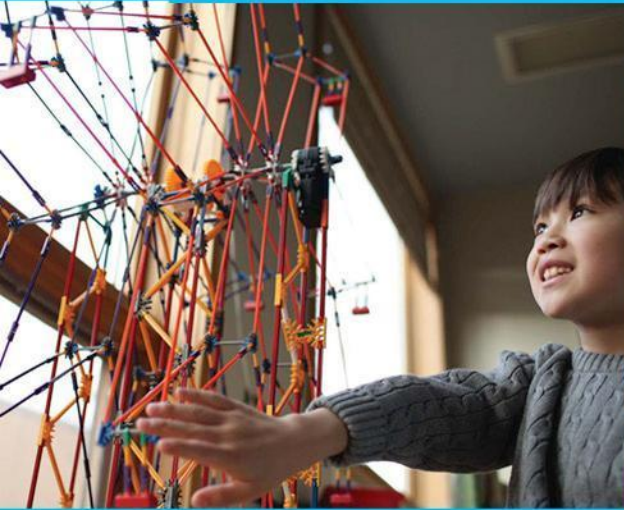


Northwest Evaluation Association

# All Kids Learn.

We passionately believe  
it, and partner to make  
this an everyday reality  
for every child.

*Partnering to help all kids learn*



Questions?  
Comments....  
Thanks

Susan Klassen  
[susan.klassen@nwea.org](mailto:susan.klassen@nwea.org)  
503.624.1951